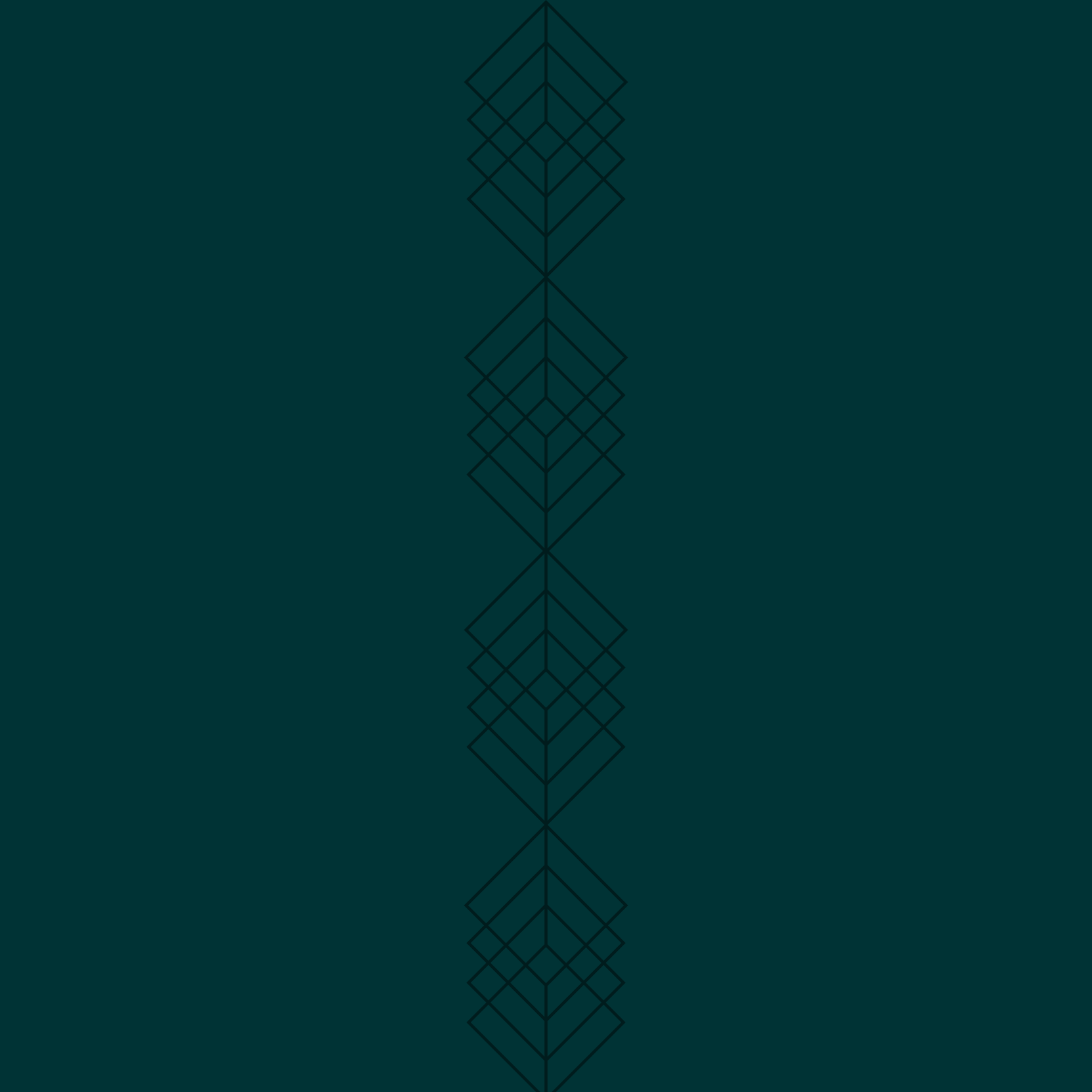




# THE JADE

IN THE GARDENS



*21 St Johns St, Gardens, Cape Town*



# THE JADE

## IN THE GARDENS

Nestled in the heart of Cape Town's design district, the Jade is a luxury hotel for the discerning traveller. Its open-house style is perfectly suited to the vibrant location, Cape Town's trendy east city precinct, home to some of the city's best coffee shops, restaurants and art studios.

The Jade, which is within walking distance of the Company Gardens and Parliament, has been designed to celebrate the neighbourhood and to attract locals and visitors alike. With 360-degree views of Table Mountain, the City, Lion's Head and Signal Hill, it seamlessly offers modern African luxury and an authentic Cape Town city experience.



## EAT AND DRINK AT THE JADE

Inspired by its surrounds, which include some of Cape Town's most interesting and celebrated eating and drinking establishments, The Jade offers three exclusive culinary destinations to meet our guests' every need. Menus change according to the season and availability of fresh produce.



Watch the world go by from our stylish coffee shop on the ground floor of The Jade. Johnny's Roastery allows you to sample some of the city's best dark roast brews and fresh artisanal baked goods. It's the perfect place to relax, meet friends or work.







This exquisite seafood restaurant with panoramic views of Table Mountain showcases the bounty of the Atlantic Ocean. Sip Cap Classique and chilled, exquisitely fresh, sustainable seafood from our spectacular raw bar. Feast on an array of Portuguese and Spanish inspired sea-to-table offerings, or indulge in our succulent meat dishes, brimming with the garden-fresh flavours of Southern Europe





# THE SAINT

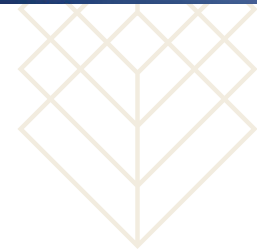
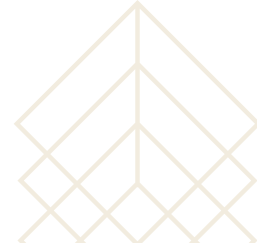
## ROOFTOP BAR & LOUNGE

When you are in a city with arguably the best backdrop in the world you want a place to celebrate in style. With outstanding views of Table Mountain and the magical city skyline, there is no better place to escape the bustle of the city, toast the setting sun and dance the evenings away than at The Saint.

The Bohemian-styled alfresco roof garden, resident DJ and infinity pool offers sun loungers, private lounge sofas and a custom-built bar, perfect for long lunches or intimate moments. Expect a variety of local craft beers, frozen cocktails, artisanal gins and a handpicked selection of award-winning Cape wines that pair perfectly with our seasonal menu.







## OUR NEIGHBOURHOOD

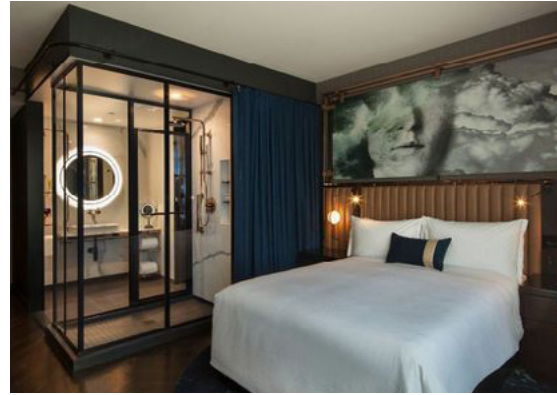
The Jade is ideally located in one of Cape Town's most interesting food districts. It is walking distance from Truth Coffee, named the world's best coffee shop by The Daily Telegraph for two years in a row. FYN, maverick restaurateur Peter Tempelhof's new fine dining restaurant, which has made short work of topping best restaurant lists, is also close by. It is also a stone's throw from Bree Street, the coolest strip in Cape Town, Kloof Street, home to some of Cape Town's most loved dining establishments and the iconic V&A Waterfront.

## STAY AT THE JADE

The Jade features 88 individually styled bedrooms, each with a balcony and mountain views. Concrete ceilings and bare brick walls contrast with luxurious touches that include panelled headboards, marble surfaces and curated South African art. Beautifully comfortable beds are made up with Egyptian cotton linen; blackout blinds ensure a perfect night's sleep. The bespoke bathrooms offer walk-in showers and complimentary organic toiletries.

Guests are treated to a breakfast bag each morning, which is discreetly hung on a hook outside their bedroom door, and may include seasonal fresh fruit, freshly squeezed fruit juice, granola or pastries. Finishing touches include neighbourhood guidebooks, high-speed Wi-Fi and books carefully selected by local authors.

## ROOM OPTIONS



### SUPERIOR ROOMS

- ❖ Up to 2 adults and 1 child
- ❖ Queen or King bed
- ❖ 33m<sup>2</sup>
- ❖ Pet friendly

The Superior Rooms are delightfully light-filled and spacious. Wall-to-wall windows offer spectacular views of Cape Town, and there is ample space to unwind. A desk and chair ensure comfort for those needing to work. All rooms are elegantly decorated in neutral tones and offer everything you would expect of a modern African, luxury experience.



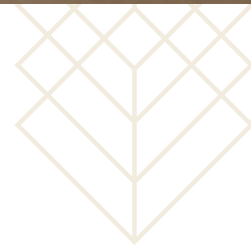
### DELUXE ROOMS

- ❖ Up to 2 adults and 2 children
- ❖ Queen or King bed
- ❖ 44m<sup>2</sup>

The Deluxe Rooms are the biggest rooms and offer separate living and sleeping spaces. The Deluxe Rooms enjoy incredible views across the city and Table Mountain. With a bespoke kitchenette and daybeds, the Deluxe Rooms are perfect for longer stays. The separate en-suite bedroom provides privacy from the living space. The Deluxe Rooms can be connected to a Superior Room if extra space is required.







## THE COLLECTION @ THE JADE

Need a space? Looking to host an intimate dinner? Need somewhere for a workshop? We have the perfect space for you. The Collection comprises four differently sized rooms at The Jade, which can be hired separately or combined together to create a stylish space for private gatherings, intimate small groups dining, meetings and conferences.

Located on the 9th floor of The Jade, the view across the city is bound to impress. The large balcony offers outside space and the stylish open-plan kitchen serves a private bar. Our dedicated events planner is at hand to create menus suited to all occasions and to meet all your events needs.





## AMENITIES AT THE JADE



We want to meet your every need. Our dedicated Concierge will ensure your stay at The Jade is an exceptional experience.

In addition to our luxurious bedrooms, delicious food, an inviting lobby and vibrant rooftop bar, we have curated the following amenities to meet your needs:

- ❖ The Jade is pet friendly\*
- ❖ A dedicated concierge to help plan your visit
- ❖ Private dining rooms
- ❖ A conference venue, ideal for meetings and events
- ❖ Various business meeting areas
- ❖ Parcel deliveries are accepted
- ❖ Secure storage
- ❖ A rideshare programme through our partnership with 'Share my Ride'
- ❖ Cost-effective on-site car hire
- ❖ A Members Club Programme, offering additional benefits to members and access to special discounts with our partners

\*Small dogs are welcome. Regrets no crocodiles.





# EXPLORE CAPE TOWN FROM THE JADE

The Jade is ideally located to explore all that Cape Town has to offer.

 THE JADE - in the gardens

- 1 80m to the Company Gardens
- 2 100m to Parliament
- 3 300m to Cape Town City Centre
- 4 650m to Harrington Street
- 5 800m to Mount Nelson Hotel
- 6 1km to Gardens Shopping Centre
- 7 2km to Table Mountain
- 8 4km to V&A Waterfront
- 9 5km to Signal Hill
- 10 6km to Clifton and Camps Bay  
(Not indicated on map)
- 11 11km to Kirstenbosch  
(Not indicated on map)
- 12 17km to Constantia Wine Farms  
(Not indicated on map)



• Map is not to scale

**10**

**7**

**9**

**8**

**3**

**1**

**2**

**4**

**5**

**6**



















## SEE YOU SOON

Come discover The Jade, situated in the heart of one of Cape Town's most vibrant neighbourhoods. We are a stone's throw from Parliament and the Company Gardens.



**21 St Johns St, Gardens, Cape Town**